



WaterAid/ Guilhem Alandry

Sector Strengthening in Gololcha Woreda, Oromia - The SusWASH Project

Tseguereda Abraham

WaterAid Ethiopia

09/07/2018

Contents



Sector Strengthening in
Gololcha Woreda
(The SusWASH Project)

1

Sector Strengthening in
WaterAid

4

Challenges and Way
Forward

2

WAE Sector
Strengthening Model

5

Expected Outcomes

What is Sector Strengthening in WaterAid?

💧 Working in ways that **transform the enabling environment** to ensure **WASH services and behaviours** are delivered and **sustained**

Enabling Environment

National

Regional

Woreda/District



What is Sector Strengthening in WaterAid?

- 💧 Strengthening sector **coordination** and government capacity to **monitor, plan and budget**
- 💧 Demonstrating sustainable models of **service delivery** and behavior change
- 💧 Enhancing **accountability** mechanisms and **empowering citizens** to demand their rights

Enabling Environment

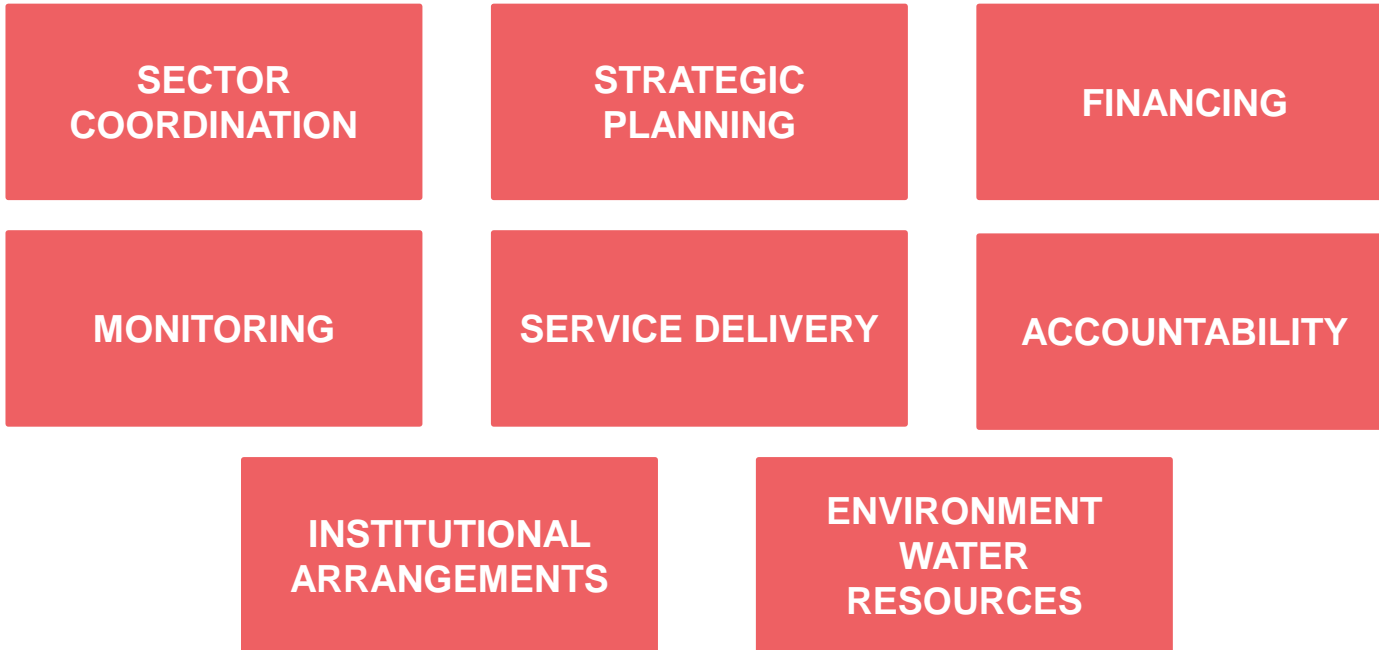
National

Regional

Woreda/District



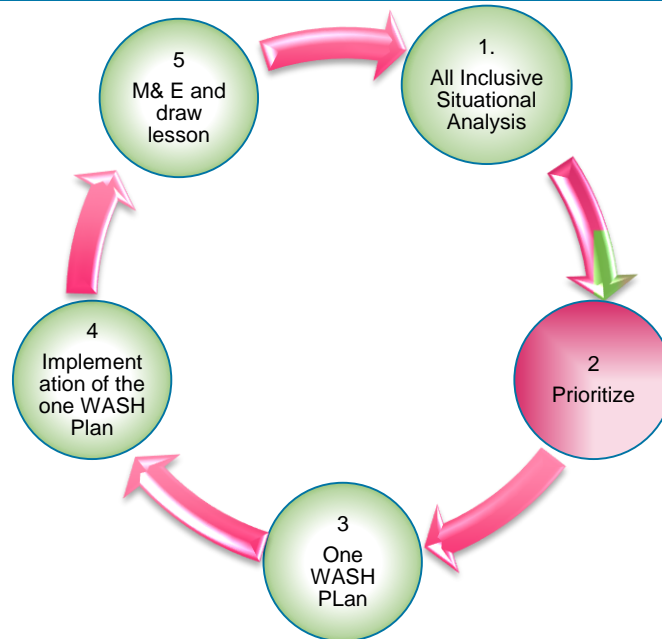
What does sector strengthening involve?



How is sector strengthening delivered?

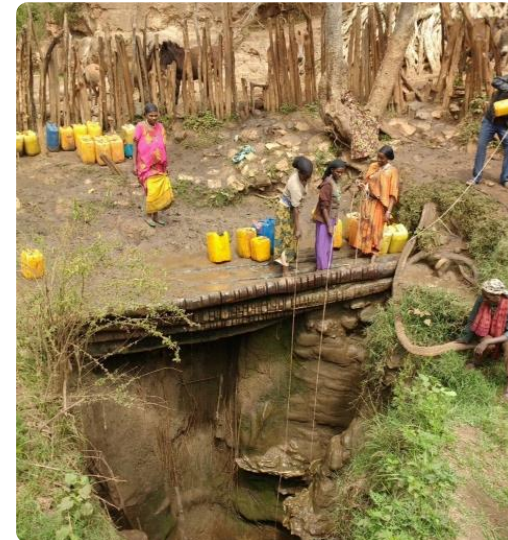
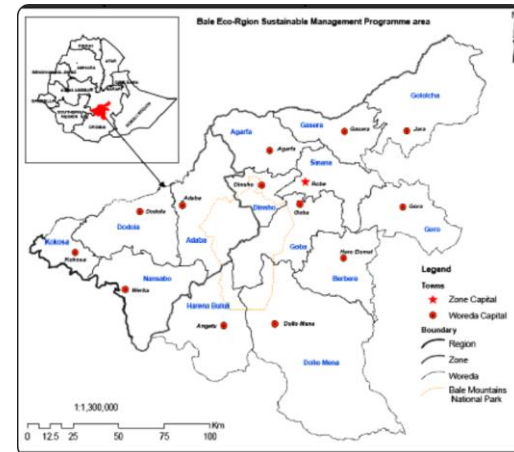


WAE Sector Strengthening Model



Gololcha Woreda

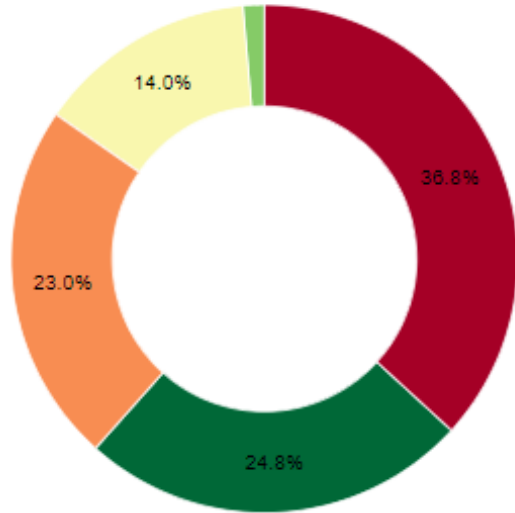
- Located in Bale Zone, Oromia Region
- Water coverage is reportedly 50.5%
- Non-functionality rate of around 33.3%
- 15 kebeles have no access to water supply
- School water coverage is at 17%
- Only 1 in 4 health facilities have water supply
- Sanitation coverage is reported at 64%
- 9 out of the 25 kebeles have been declared open defecation free.



Water Service Levels in Gololcha Woreda

Continuity of supply & Reliability

Water continuity of supply [Hours supply per day]



- Water is available all day, every day
- Water is available for at least 16h a day, every day
- Water is available every day, but not all the time
- Water is available most days
- Water is available only on a small number of days

100%

Coverage

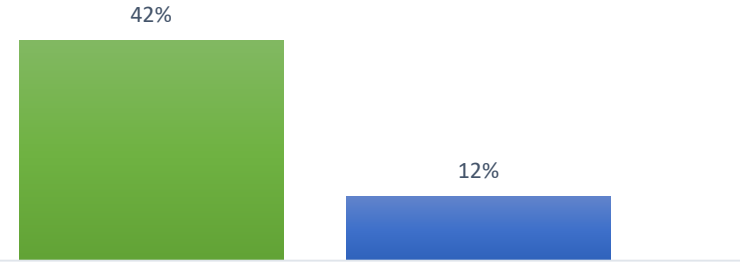
80%

60%

40%

20%

0%



- Improved water sources access
- Improved & functional water sources access

Sector Strengthening in Gololcha (The SusWASH Project)

1. Support universal plan based on asset inventory , Life cycle costing
2. Support Coordination mechanisms
3. Establish accountability mechanisms
4. Peer learning, coaching to support service delivery
5. Sharing learning at zonal national and Regional level



District Sustainability Assessment

(Gololcha District, SusWASH Project)

WASH				
	Weak/non-existent Minimum requirement not met	Fragile but strengthening	Transitional	Fully transitioned
Coordination				
Strategic planning				
Financing				
Institutional arrangements				
Monitoring & Accountability				

How we are strengthening the building blocks:

Building Blocks	Interventions
Coordination	Supporting establishment of ONEWASH woreda steering and technical committees
Strategic planning	Supporting development of Universal Access Plan based on service level baseline and asset inventory (mWater)
Financing	Supporting assessment of finance and life cycle costs for water and sanitation services

How we are strengthening the building blocks:

Building Blocks	Interventions
Institutional Arrangements	Assessing human resource capacity, packaging capacity building modules, mentoring & coaching to ensure woreda staff fulfil their roles & responsibilities
Monitoring and Accountability	Supporting regular asset inventory data collection, strengthening woreda MIS centre, supporting establishment of citizen forums, advocating for institutionalisation of social accountability platforms
Service delivery	Demonstrating sustainable management models for rural water supply and delivering on the job training, refresher, mentoring and coaching

Challenges and Way Forward

1. Systems strengthening found to be costly & not a priority compared to service delivery
2. continued & intensive support needed to improve situational analysis/planning capacity
3. Design capacity plans that improve implementation of universal plans



Expected Outcomes

1. Clear incentive for good performance of local government and utility
2. Greater accountability through strengthened citizen forums and accountability platforms
3. Wider change and replication in other woredas and at National level





WaterAid/ Behailu Shiferaw

Thank you

WaterAid